

“Your move is our motivation”

**Alderwood Drive, Abridge, RM4  
Four Bedroom Semi Detached House**

**Monthly Rental Of £1,795**

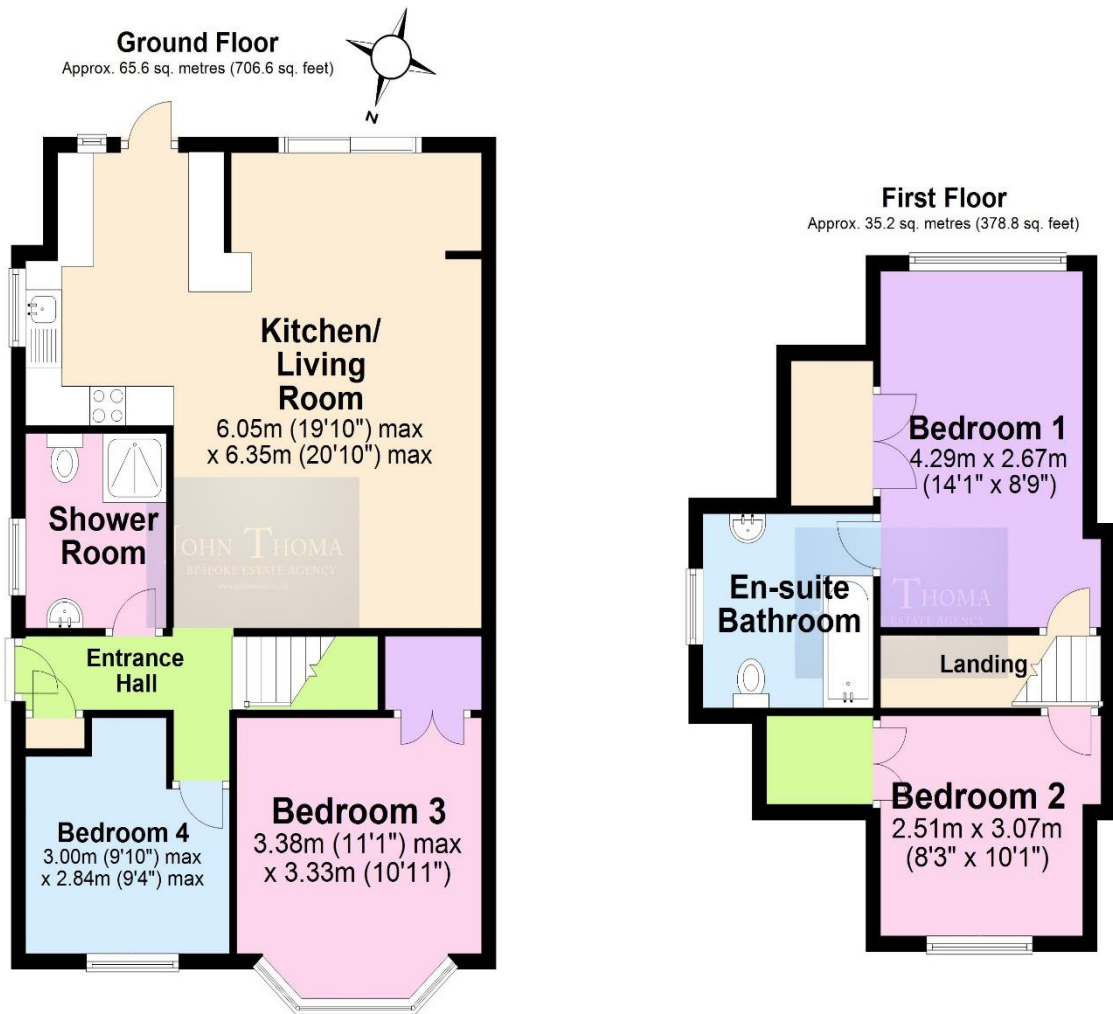


A SPACIOUS FOUR BEDROOM HOME IN A SOUGHT VILLAGE LOCATION IN ABRIDGE CLOSE TO LOCAL AMENITIES WITH SCHOOLS, RESTAURANTS AND SHOPS NEARBY. THIS HOME HAS A HUGE OPEN PLAN FITTED KITCHEN / LIVING ROOM, TWO BEDROOMS ON THE GROUND FLOOR WITH A SHOWER ROOM AND TWO BEDROOMS ON THE FIRST FLOOR WITH A LARGE BATHROOM. THE GARDEN IS SOUTH FACING WITH A LARGE PAVED PATIO AND A LAWN. TO THE FRONT OF THE PROPERTY THERE IS A DRIVEWAY PROVIDING PARKING FOR SEVERAL CARS.

\*\*\*\*\* AVAILABLE FROM APRIL 2021 \*\*\*\*\*

- A FOUR BEDROOM SPACIOUS HOME AVAILABLE FROM APRIL 2021
- EXCELLENTLY LOCATED IN THE VILLAGE OF ABRIDGE CLOSE TO AMENITIES
- THE PROPERTY HAS A HUGE OPEN PLAN LIVING ROOM / FITTED KITCHEN
- TWO BEDROOMS ON THE GROUND FLOOR AND A SHOWER ROOM
- ON THE FIRST FLOOR THERE TWO BEDROOMS AND A LARGE BATHROOM
- THE GARDEN IS SOUTH FACING WITH A PAVED PATIO AND LAWN

# Floor Plan



Total area: approx. 100.8 sq. metres (1085.4 sq. feet)

Illustrations are for viewing purposes only. Measurements are not to scale. Property Total and Floor Totals are Internal figures only and do not include Garden, Balconies, Patios or Terraces if any shown. Drawn by SPG.  
Plan produced using PlanUp.